

21ST NOVEMBER 2025

The darker nights are definitely drawing in now as we race towards Christmas! We kicked off the week talking about making sure our journeys home from school were as safe as possible and the children all took home their annual 'freebie' - a reflector which can be attached to coats or book bags to help them be seen a little better in the dark evenings.

Keep a look out around school next week for our new 'Parking Buddies' which will be out on the pavements to help keep them safer on the route leading up to school. We are still witnessing near misses most days and we are grateful to the team at Safer Neighbourhoods for the grant which has helped us to purchase these to help us in our efforts to keep the school gates safer.

Remember that the deadline for placing orders for Christmas cards is **12pm on Tuesday 25th November** and school do receive a small percentage of commission on any orders placed: please do support us with an order if you are able to! Details of how to place an online order are on the proof your child brought home with their design if they completed one. Thank you, in advance, for your ongoing support.

Please remember that I am still *unable* to authorise any term-time leave of absence requests this year and, in the majority of cases, these will incur fines. These requests should be made in advance and not retrospectively please.

Kind regards,

Mrs J Hill

## Christmas Dinner Day

Please remember that **Monday 24th November** is the final day to return your slips to let us know which dinner option your child will be having in school on Christmas Dinner Day—Wednesday 10th December. All children must return a slip please—even if they are bringing a packed lunch!



On the menu this year is: **roast turkey**, stuffing, chipolata sausages, **roast potatoes**, vegetables and gravy. The **vegetarian** option is **Quorn™ roast** and the **halal** option is **roast chicken**. The stuffing and gravy are both suitable for vegetarians. **A range of desserts will be on offer.**

For those children with special dietary requirements, or if your child has not yet brought a letter home, please contact Mrs Wagstaff in the office and she will arrange a suitable option for your child.

## Coffee Morning

Our next Coffee Morning will be on Wednesday 3rd December from 9am-11am. Julie Fearn, our Autism specialist will be joining us to talk about the importance of routines. This session is for ALL parents—routines are an important part of the day for all children for a number of reasons and Julie will be on hand to talk through all the difficulties I know we all face as parents in establishing and sticking to routines on busy days and frantic mornings at home! Please look out for information coming home next week on how to sign up so that Mrs Clarke knows how many biscuits to buy!



## 2025/26 DATES

Tuesday 25th November	12pm	Deadline for Christmas card orders
Thursday 27th November	All Day	Arts Day—Artist of the Term: Alma Thomas
Wednesday 3rd December	9.00-11.00	Coffee Morning—Information to follow
Wednesday 10th December	All Day	Christmas Jumper Day
Wednesday 10th December	12:15pm	Christmas Dinner
Thursday 11th December	PM	Year 6 Pantomime Trip—see letter
Friday 12th December	All Day	Year 3 Greek Day—details to follow
Wednesday 17th December	2pm & 6pm	Year 3 Christmas Production to Parents
Thursday 18th December	All Day	Year 6 WWII Day—details to follow
Friday 19th December	All Day	Reward Day—non-uniform for all pupils
Friday 19th December	3:30pm	Break up for Christmas Holiday
Monday 5th January 2026	8:55am	Spring Term 1 Begins
Wednesday 28th January 2026	7:30am—7:00pm	Year 6 Harry Potter Studio Tour Trip—see letter
Thursday 12th February 2026	3:30pm	Break up for Half Term Holiday
Friday 13th February 2026	All Day	INSET 4
Monday 23rd February 2026	8:55am	Spring Term 2 Begins
Friday 27th March 2026	3:30pm	Break up for Easter Holiday
Monday 13th April 2026	8:55am	Summer Term 1 Begins
Friday 15th—Sunday 17th May 2026	TBC	Year 6 PGL Residential
Friday 22nd May 2026	3:30pm	Break up for Half Term Holiday
Monday 1st June 2026	All Day	INSET 5
Tuesday 2nd June 2026	8:55am	Summer Term 2 Begins
Thursday 23rd July 2026	3:30pm	Break up for Summer Holiday

### Arts Day—Thursday 27th November

Next week, we will be spending Thursday 27th November celebrating this term's focus artist, Alma Thomas, an African-American painter famous for her bright, abstract paintings. We are really looking forward to seeing the work the children create in her style next week! Follow our Facebook page ready to see some examples of our finished work!



### School Dinners

Next week, we will be back to our **Week 3 menu**. Please remember that school dinners cost £2.80 and **MUST** be paid for, **ONLINE, IN ADVANCE**. [Week 3 Menu](#)



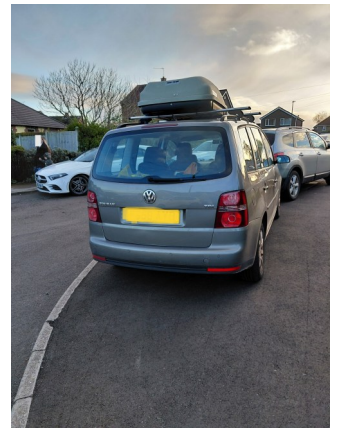
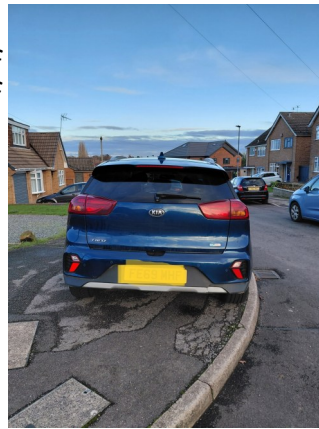
## Parking

I was quite disgusted to hear the manner in which one of our parents has allegedly spoken to a local resident this week when challenged over some irresponsible parking locally. I have included images taken from around the Rushdale Avenue area to again highlight just how dangerously some parents are choosing to park.



Parking on pavements forces children and their parents who are walking to school to walk in the road.

Parking on corners can block the view of oncoming traffic forcing cars into the middle of the road. **This often happens outside school.** These cars are also ON THE PAVEMENT.



*How would an emergency vehicle get through here?*



Please remember that, if you **MUST** drive to school to drop off and collect your children, it is imperative that you park safely and are mindful of not blocking residents' access to their properties. This prevents unnecessary altercations between adults that can be witnessed by the children.





DERBY SEND VOICE

27TH  
NOV  
25

# PARENT CARER DROP IN

Derbion Centre Community Hub



**FamilyHubDerby**

Stronger families through support & friendship



UNIVERSITY OF  
**DERBY**

**FREE LAW  
CLINIC**



27.11.2025



10am - 1pm

**Join Derby SEND Voice**

Family Hubs

SENDIASS

University of Derby

SEND Law Clinic

come along for a relaxed chat, meet a few services  
and connect with other SEND parent carers.

Please feel free to bring children



[derbysendvoice@gmail.com](mailto:derbysendvoice@gmail.com)

[www.derbysendvoice.co.uk](http://www.derbysendvoice.co.uk)