



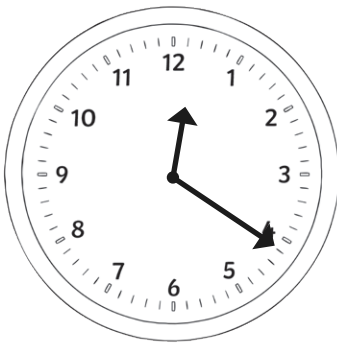
Converting Between Digital and Analogue Clock Times

I can convert between digital and analogue clock times.



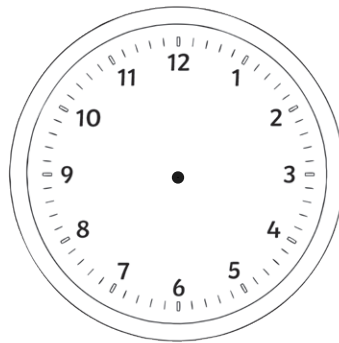
1. Draw these digital times on to the analogue clocks and write the time in numbers and words underneath. The first one has been done for you.

a) 12:21

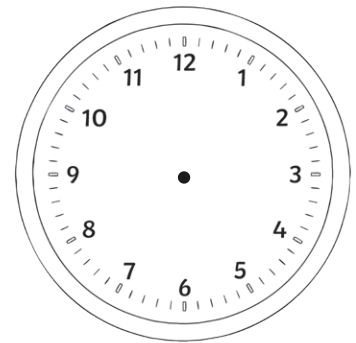


21 minutes past 12

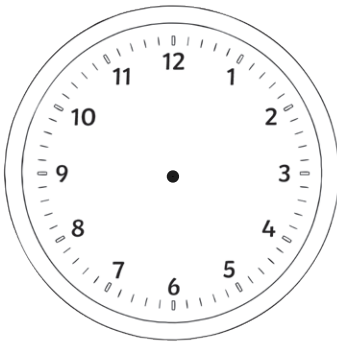
b) 8:17



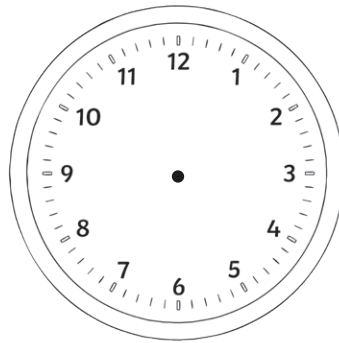
c) 9:04



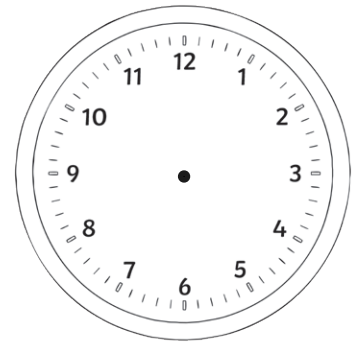
d) 3:11



e) 11:19



f) 7:07

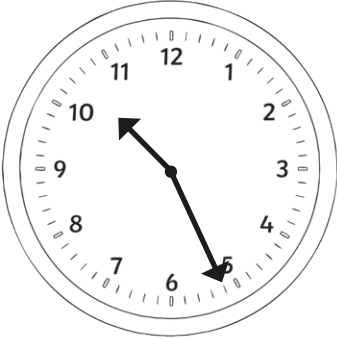




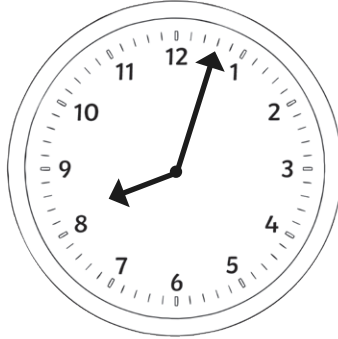
Converting Between Digital and Analogue Clock Times

2. Write the digital times for these analogue clocks

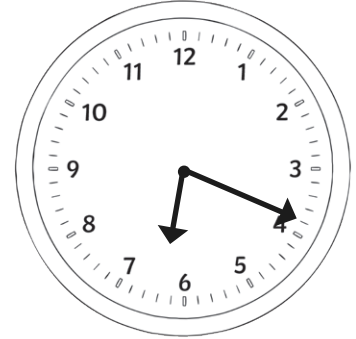
a)



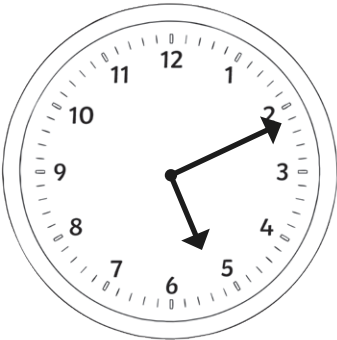
b)



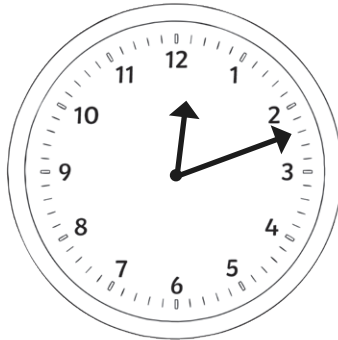
c)



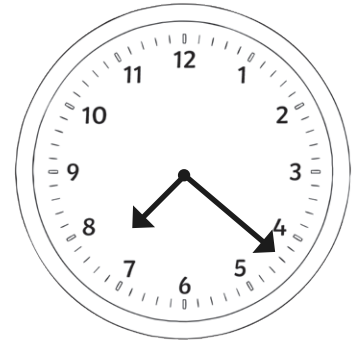
d)



e)



f)





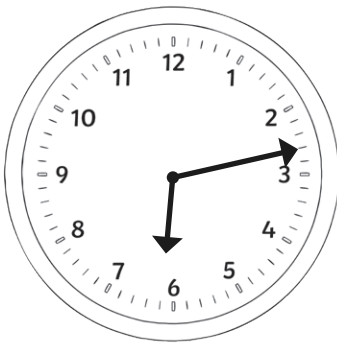
Converting Between Digital and Analogue Clock Times

I can convert between digital and analogue clock times.



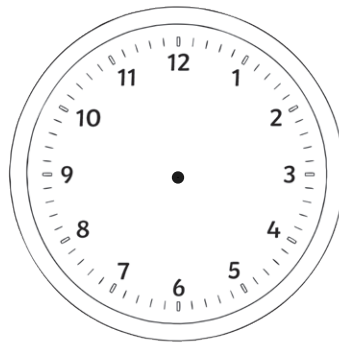
1. Draw these past-the-hour digital times on to the analogue clocks and write the time in numbers and words underneath. The first one has been done for you:

a) 6:13

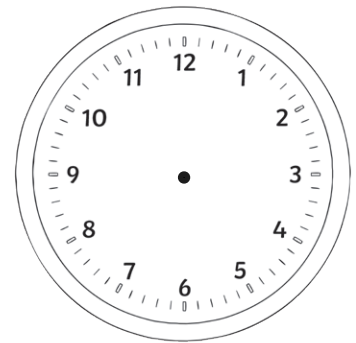


13 minutes past 6

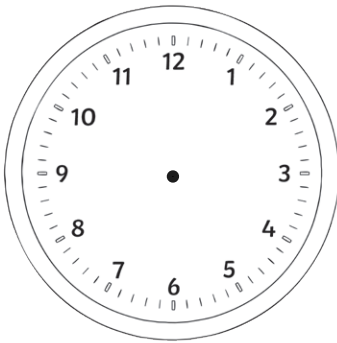
b) 9:24



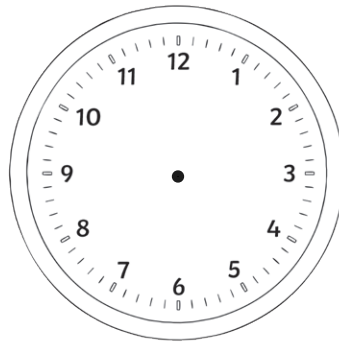
c) 7:09



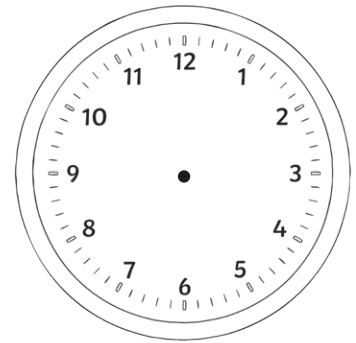
d) 2:17



e) 3:29



f) 8:22

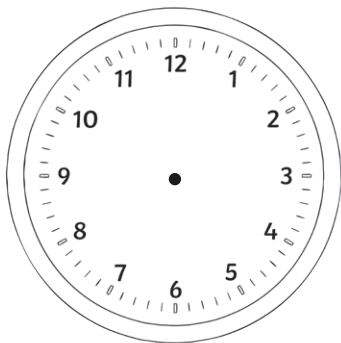




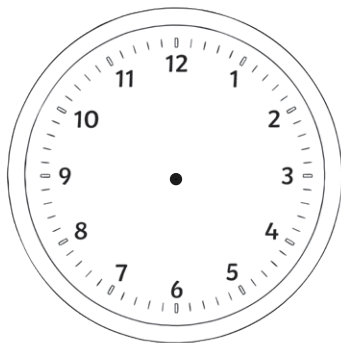
Converting Between Digital and Analogue Clock Times

2. Draw these past-the-hour digital times on to the analogue clocks and write the time in numbers and words underneath.

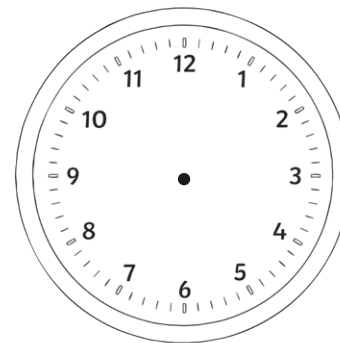
a) 9:44



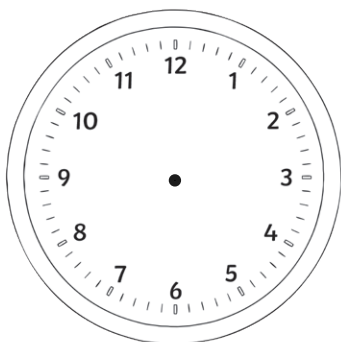
b) 8:56



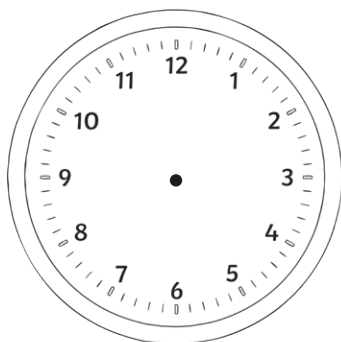
c) 3:49



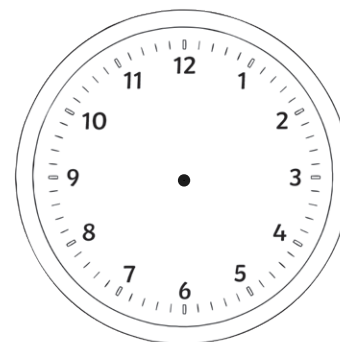
d) 5:32



e) 1:53

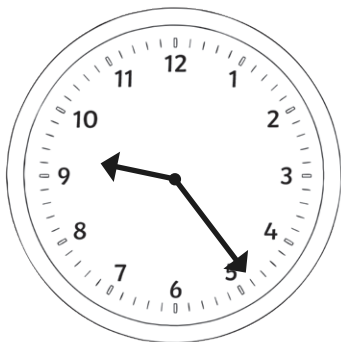


f) 10:38

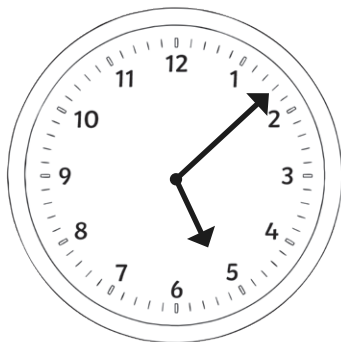


3. Write the digital times for these past-the-hour analogue clocks.

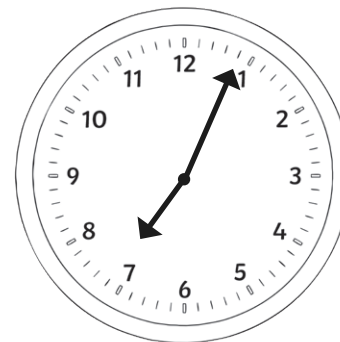
a)



b)

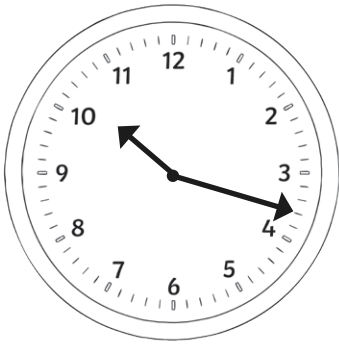


c)



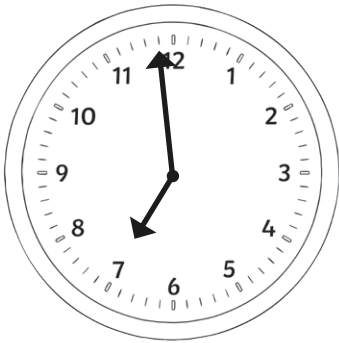
Converting Between Digital and Analogue Clock Times

d)

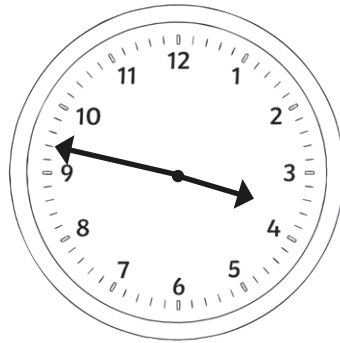


4. Write the digital times for these to-the-hour analogue clocks.

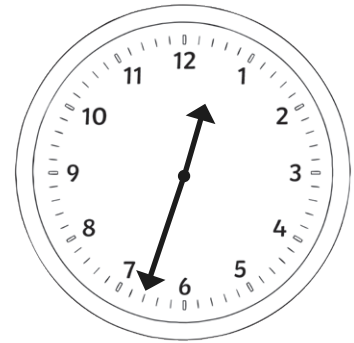
a)



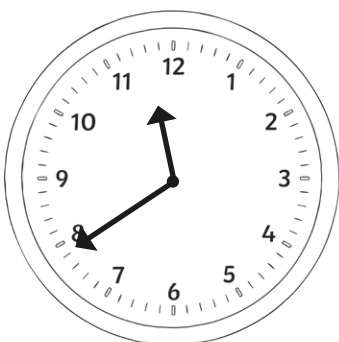
b)



c)



d)





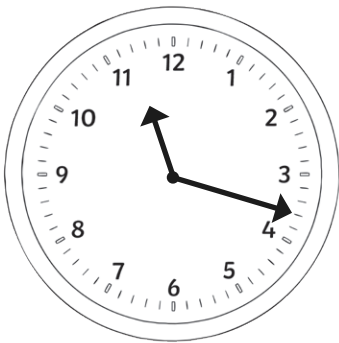
Converting Between Digital and Analogue Clock Times

I can convert between digital and analogue clock times.



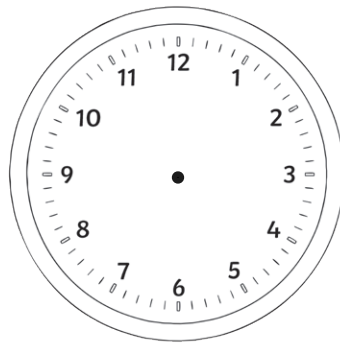
1. Draw these digital times on to the analogue clocks and write the time in numbers and words underneath. The first one has been done for you.

a) 11:18

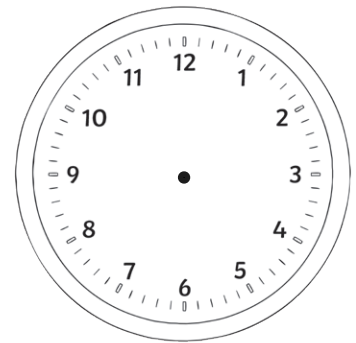


18 minutes past 11

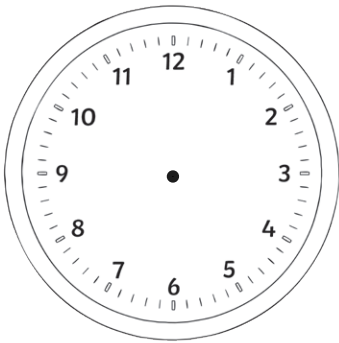
b) 8:38



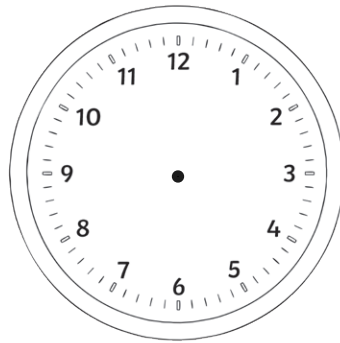
c) 7:54



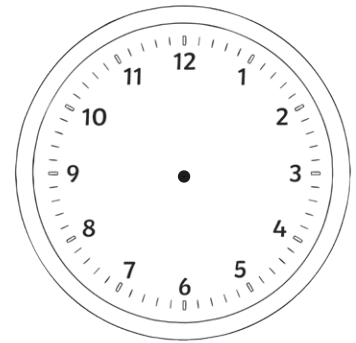
d) 6:24



e) 5:49



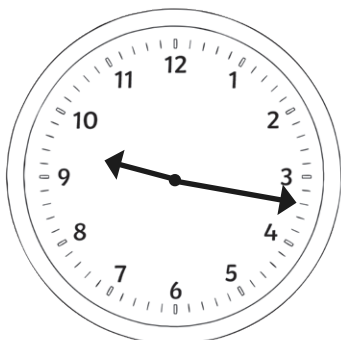
f) 2:16



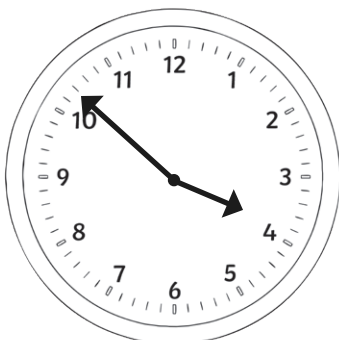
Converting Between Digital and Analogue Clock Times

2. Write the digital times for these past-the-hour analogue clocks.

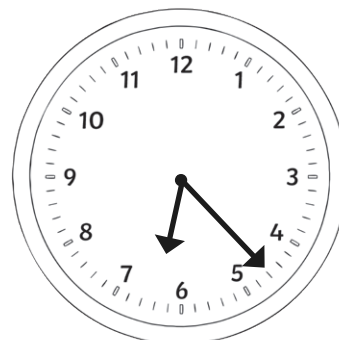
a)



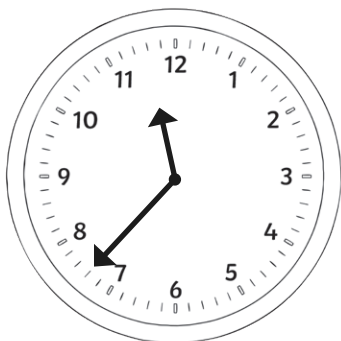
b)



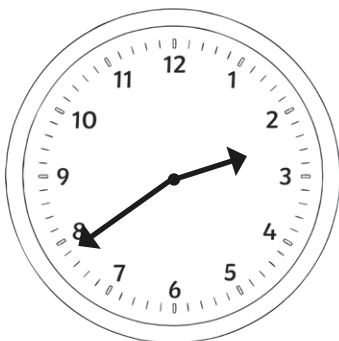
c)



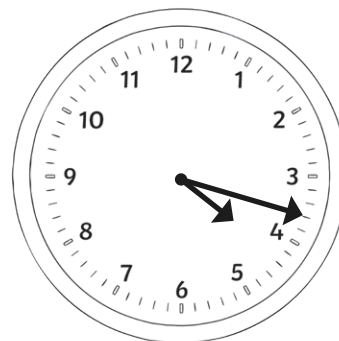
d)



e)



f)



3. Answer these questions.

a) Trudi gets in from school at 28 minutes past 3. She watches TV for 10 minutes. What time does she stop watching TV? Write your answer in digital form.

 :

b) At 6:35, Peter starts his homework. It takes him 23 minutes to complete it. What time does he finish his homework? Write your answer in numbers and words.

c) Junaid starts jogging at 18 minutes past 10. He runs for 52 minutes. What time does he stop jogging? Write your answer in digital form.

 :

Converting between Digital and Analogue Clock Times **Answers**



1. Minute and hour hands clearly distinguished, the times on the clocks as shown and the time written underneath each clock.

a) *21 minutes past 12* (given)

b) *17 minutes past 8*

c) *4 minutes past 9*

d) *11 minutes past 3*

e) *19 minutes past 11*

f) *7 minutes past 7*

2. a) *10:26*

b) *8:03*

c) *6:19*

d) *5:11*

e) *12:12*

f) *7:22*



1. Minute and hour hands clearly distinguished, the times on the clocks as shown and the time written underneath each clock:

a) *13 minutes past 6* (given)

b) *24 minutes past 9*

c) *9 minutes past 7*

d) *17 minutes past 2*

e) *29 minutes past 3*

f) *22 minutes past 8*

2. Minute and hour hands clearly distinguished, the times on the clocks as shown and the time written underneath each clock:

a) *16 minutes to 10*

b) *4 minutes to 9*

c) *11 minutes to 4*

d) *28 minutes to 6*

e) *7 minutes to 2*

f) *22 minutes to 11*

3. a) *9:24*

b) *5:08*

c) *7:04*

d) *10:18*

4. a) *6:59*

b) *3:47*

c) *12:33*

d) *11:39*

Converting between Digital and Analogue Clock Times **Answers**



1. Minute and hour hands clearly distinguished, the times on the clocks as shown and the time written underneath each clock:

a) *18 minutes past 11* (given)

b) *22 minutes to 9*

c) *6 minutes to 8*

d) *24 minutes past 6*

e) *9 minutes past 9*

f) *18 minutes to 12*

g) *11 minutes to 6*

h) *16 minutes past 2*

2. a) *9:17*

b) *3:52*

c) *6:23*

d) *11:37*

e) *2:39*

f) *4:17*

3. a) *3:38*

b) *2 minutes to 7*

c) *11:10*