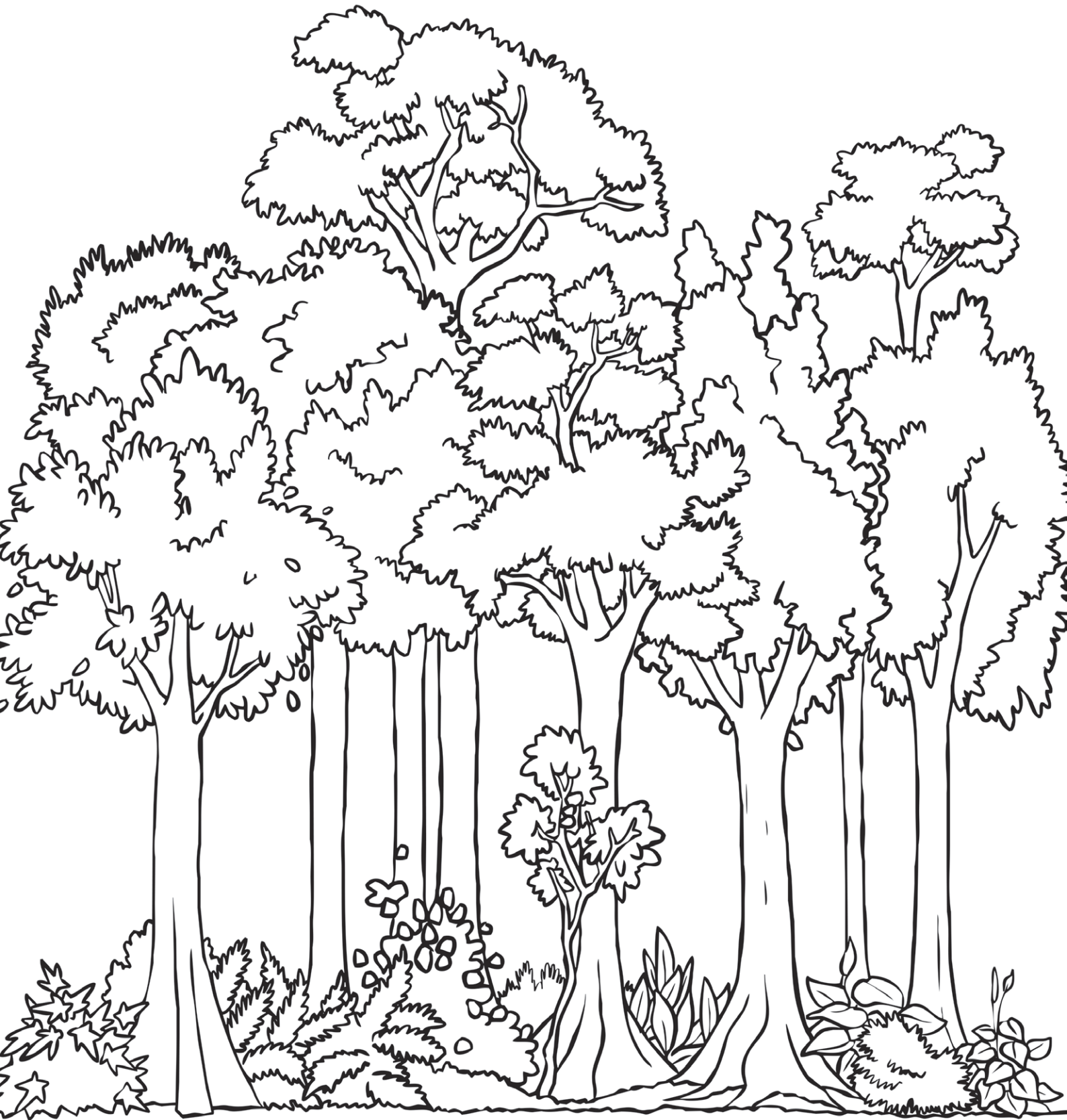


# Animals in the Layers of the Rainforest

Layers



1. Cut the labels for the layers of the rainforest and place them in order from the lowest to the highest layer. The first one has been done for you.

### Forest floor

- Not good at climbing
- Can camouflage

### Understory

- Can climb to this layer
- Hides away in the plants

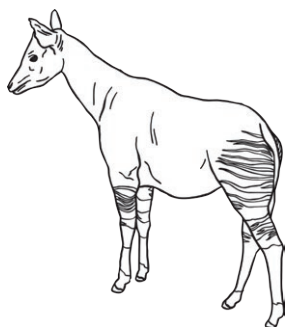
### Emergent Layer

- Have wings
- Flying or gliding
- Good climbers

### Canopy

- Long arms
- Swinging
- Claws for climbing

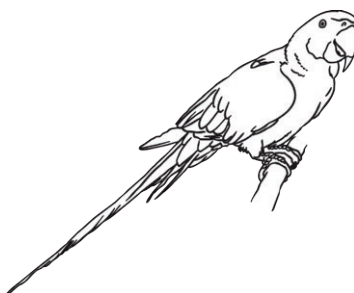
2. Draw the animals in the rainforest layers picture.



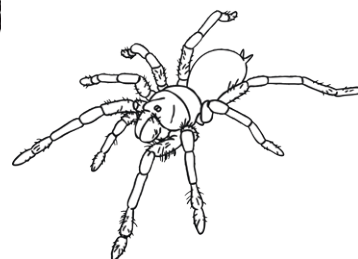
**okapi** (a giraffe-like mammal)



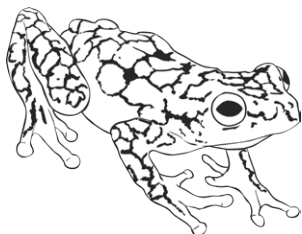
**giant anteater** (a large mammal)



**blue and yellow macaw** (a parrot)



**Brazilian salmon tarantula** (a large spider)



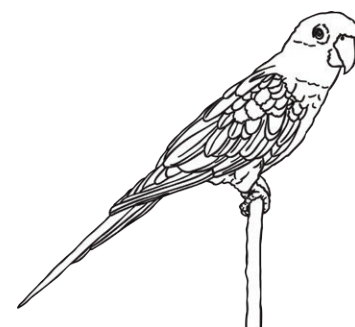
**poison frog** (an amphibian)



**orangutan** (a great ape)



**golden lion tamarin** (a monkey)

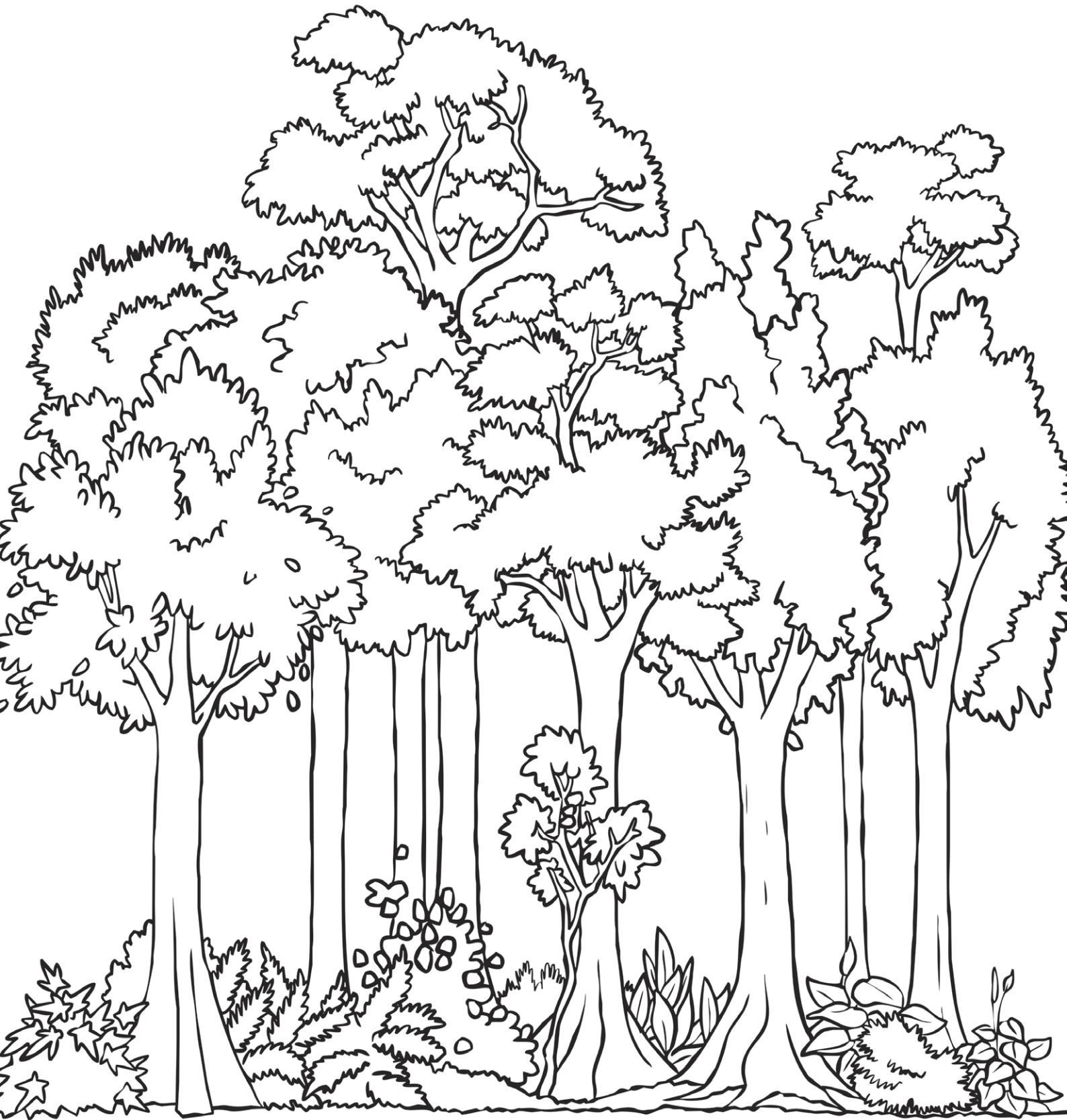


**sun conure** (a parrot)

# Animals in the Layers of the Rainforest

Layers







1. Cut out the labels for the layers of the rainforest and place them in order from the lowest to the highest layer. The first one has been done for you.

**Forest Floor**

Animals may have the ability to camouflage themselves against soil, tree trunks and leaves. They are not good at climbing.

**Understory**

Animals can climb to this layer and may try to hide away from predators in the flowers and plants.

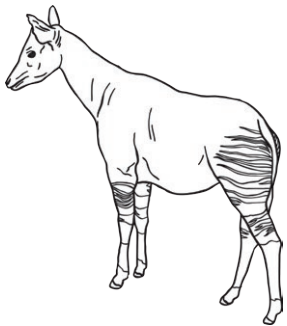
**Emergent Layer**

Animals have wings for flying or gliding; or are very good climbers.

**Canopy**

Animals have long arms for swinging or claws for climbing.

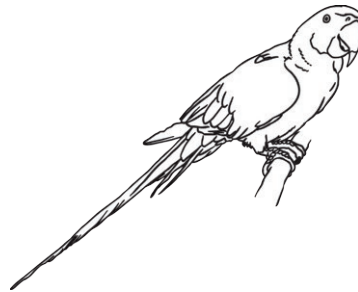
2. Draw the animals in the rainforest layers picture.



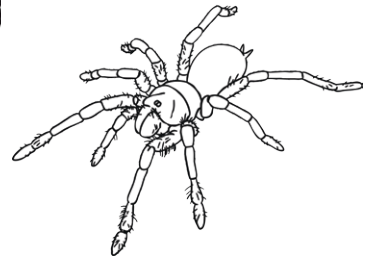
**okapi** (a giraffe-like mammal)



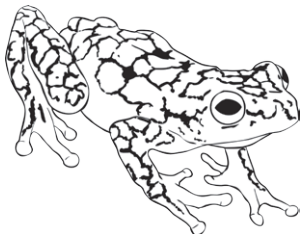
**giant anteater** (a large mammal)



**blue and yellow macaw** (a parrot)



**Brazilian salmon tarantula** (a large spider)



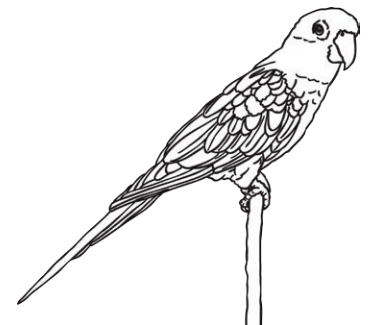
**poison frog** (an amphibian)



**orangutan** (a great ape)



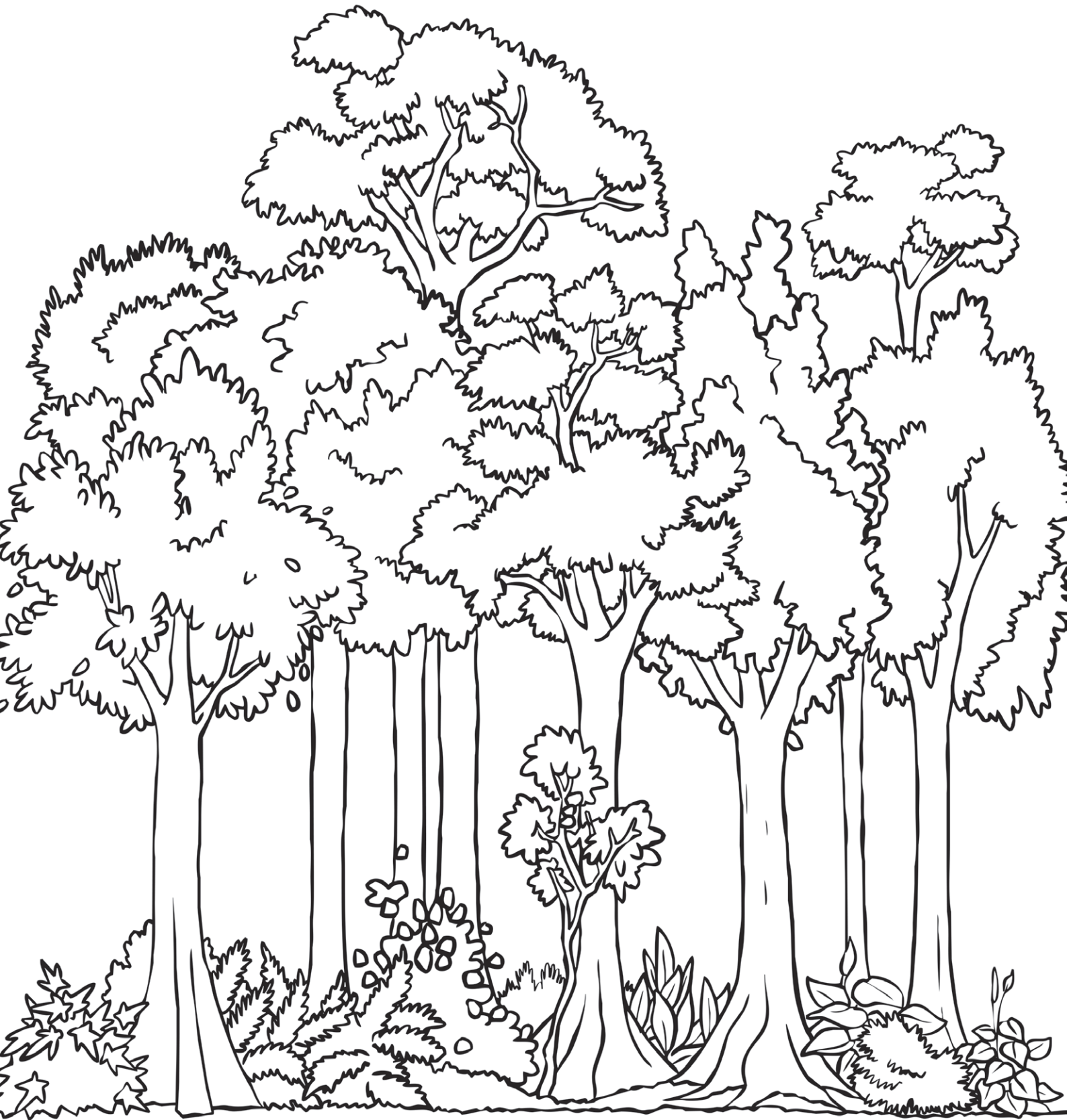
**golden lion tamarin** (a monkey)



**sun conure** (a parrot)

# Animals in the Layers of the Rainforest

Layer	Animals
<p><b>Forest Floor</b> Animals may have the ability to camouflage themselves against soil, tree trunks and leaves. They are not good at climbing.</p>	

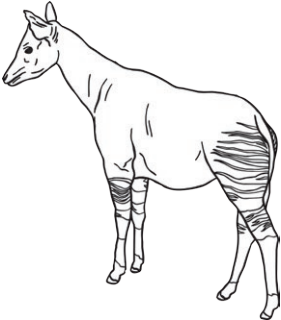




1. Cut out the labels for the layers of the rainforest and place them in order from the lowest to the highest layer. The first one has been done for you.

<p><b>Forest Floor</b> Animals may have the ability to camouflage themselves against soil, tree trunks and leaves. They are not good at climbing.</p>	<p><b>Understory</b> Animals can climb to this layer and may try to hide away from predators in the flowers and plants.</p>
<p><b>Emergent Layer</b> Animals have wings for flying or gliding; or are very good climbers.</p>	<p><b>Canopy</b> Animals have long arms for swinging or claws for climbing.</p>

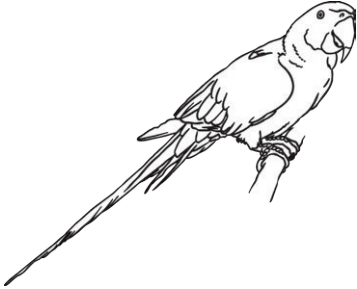
2. Write the name of the animal beside the layer it lives in.



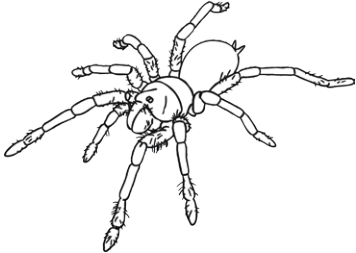
**okapi** (a giraffe-like mammal)



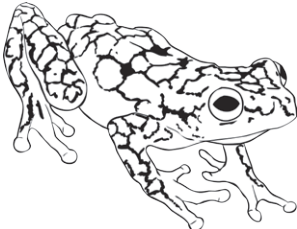
**giant anteater** (a large mammal)



**blue and yellow macaw** (a parrot)



**Brazilian salmon tarantula** (a large spider)



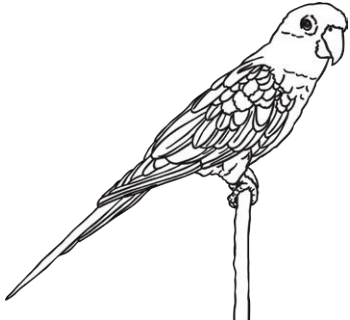
**poison frog** (an amphibian)



**orangutan** (a great ape)



**golden lion tamarin** (a monkey)



**sun conure** (a parrot)

3. Draw the animals in the rainforest layers picture.

# Animals in the Layers of the Rainforest Answers

<p><b>Emergent Layer</b></p> <p>Wings or other adaptations for flying or gliding; or very agile climbers.</p>	<p>blue and yellow macaw sun conure</p>
<p><b>Canopy</b></p> <p>Long arms for swinging, and claws or other adaptations for climbing.</p>	<p>orangutan golden lion tamarin (blue and yellow macaw and sun conure also live here)</p>
<p><b>Understory</b></p> <p>Mainly animals who try to hide away from predators in the flowers and plants (need to be able to climb).</p>	<p>Brazilian salmon tarantula poison dart frog (sun conure and orangutan also live here)</p>
<p><b>Forest floor</b></p> <p>Camouflaged in the soil and tree trunks. Not very good at climbing.</p>	<p>okapi giant anteater (poison dart frog and orangutan also live here)</p>